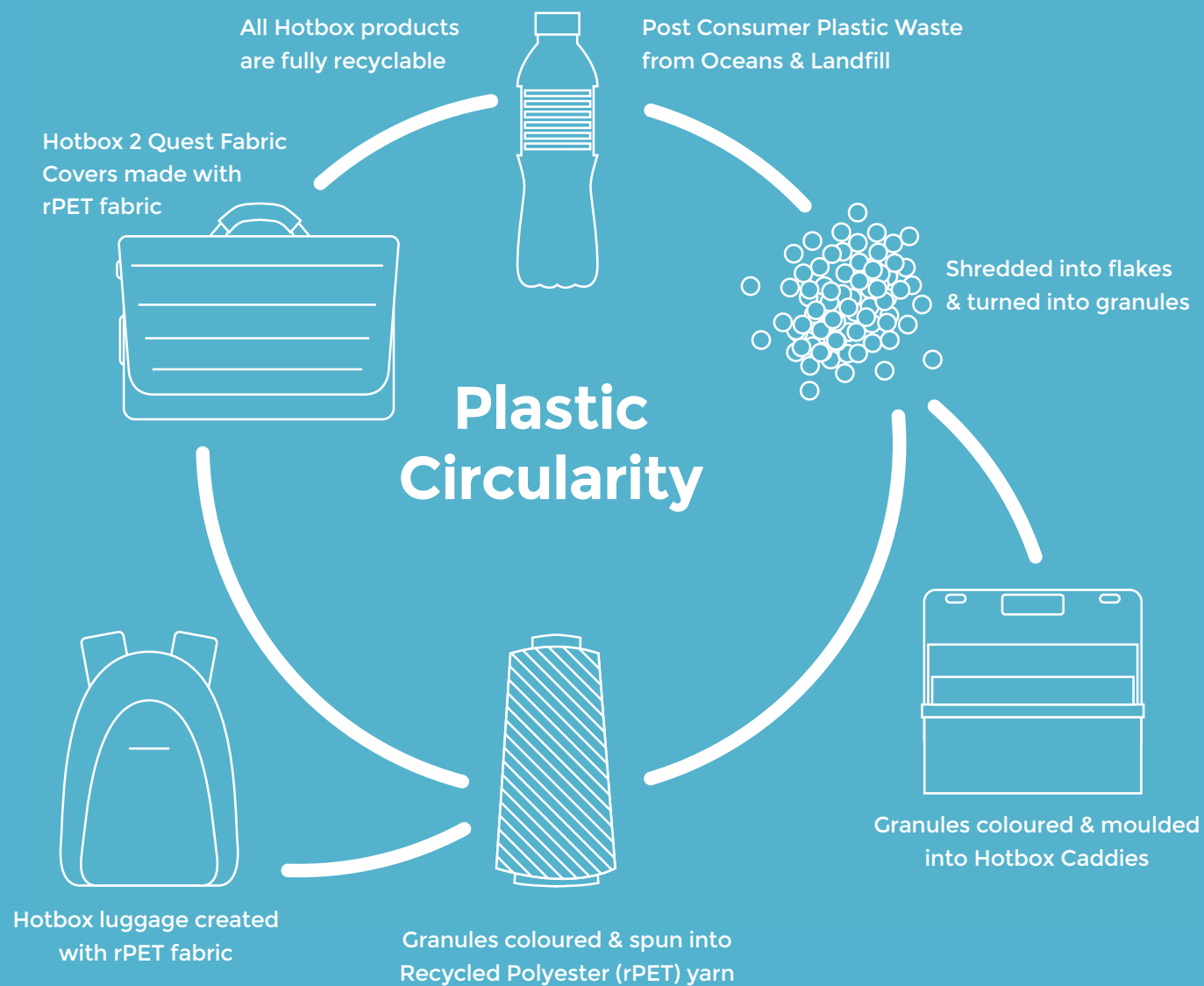




Sustainability

Benefiting people and the planet



About Hotbox

Hotbox is a global leader in designing sustainable innovative portable personal storage. Enabling workers to store, carry and organise their space, wherever they work. From mobile caddies to versatile backpacks, Hotbox provides consciously crafted solutions for hybrid and agile working.

Hotbox products are responsibly designed for the needs of people, places and the planet - made to last and never designed as single-use products.

Sustainable Sourcing & the Circular Economy

At Hotbox, we believe circularity is critical to help end plastic waste, we endeavour to source 100% Post Consumer Recycled Plastic Waste or natural materials for our products. Removing polystyrene and consumer used Single Use Plastics (SUPs) from being sent to or ending in our oceans and landfill sites ensures we are assisting in creating a Circular Economy. This not only benefits the environment, it also offers strong economic, social and climate benefits.

Our Goals

We thrive to implement sustainable actions in everything we do:



Sustainable Sourcing

We source raw materials and supplies from sustainable and ethical raw materials suppliers & through our supply chain. Monitoring sustainability practices throughout their material processing, ensuring they comply to regional sustainability laws and practices.



Product Sustainability

We design products with a focus on sustainability and durability using eco-friendly materials, which can be reused and repurposed to ensure product life extension, whilst being recyclable at the end of life.



Eco-Friendly Packaging

We have increased the use of biodegradable and recycled materials in our packaging and continue to do so.



Waste Reduction

We continue to decrease waste generation and increase recycling rates throughout our supply chain from raw material suppliers to our logistics partners. The quality and design of our products enables reuse and repurpose, with all materials being recyclable at the end of life.



Water Conservation

We work with our supply chain partners to aim to reduce water usage and promote water conservation practices. Ensuring all dyes used are environmentally friendly and do not enter local water sources.



Carbon Footprint Reduction

We continue to reduce the overall carbon footprint of our manufacturing process by working with our supply chain to optimise transportation, invest in cleaner energy sources, and encourage employees to use public transport where possible.



Employee Engagement

We foster a culture of sustainability among employees by providing training on sustainability practices, involve employees in green initiatives, and recognise and reward eco-friendly behaviours.



Community Outreach

We contribute positively to the local community and environment by supporting local charities and environmental organisations.



Regular Assessment and Improvement

We continuously assess and improve sustainability efforts by conducting supply chain sustainability audits, tracking progress towards goals, and adapting strategies based on the findings.

As a business, Hotbox, endeavours to reduce its carbon footprint wherever possible. We are conscious that our most impactful areas to focus on are our sustainable material sources for our products and our supply chain profile, so this is where we will showcase our sustainability journey so far.



The Problem



12 Million

tons of plastic are dumped in our oceans annually. That's equal to more than a rubbish truck load every minute!

Less
than 9%
of all
plastic gets
recycled

Humans eat over
40lbs
of plastic in their lifetime



100%
of mussels tested have
contained microplastics

50%

of all plastic produced (380 million tons per year) is for single-use purposes - used for just minutes and then thrown away



“There will
be more
plastic in
our oceans
than fish
by 2050”

The Ellen MacArthur Foundation

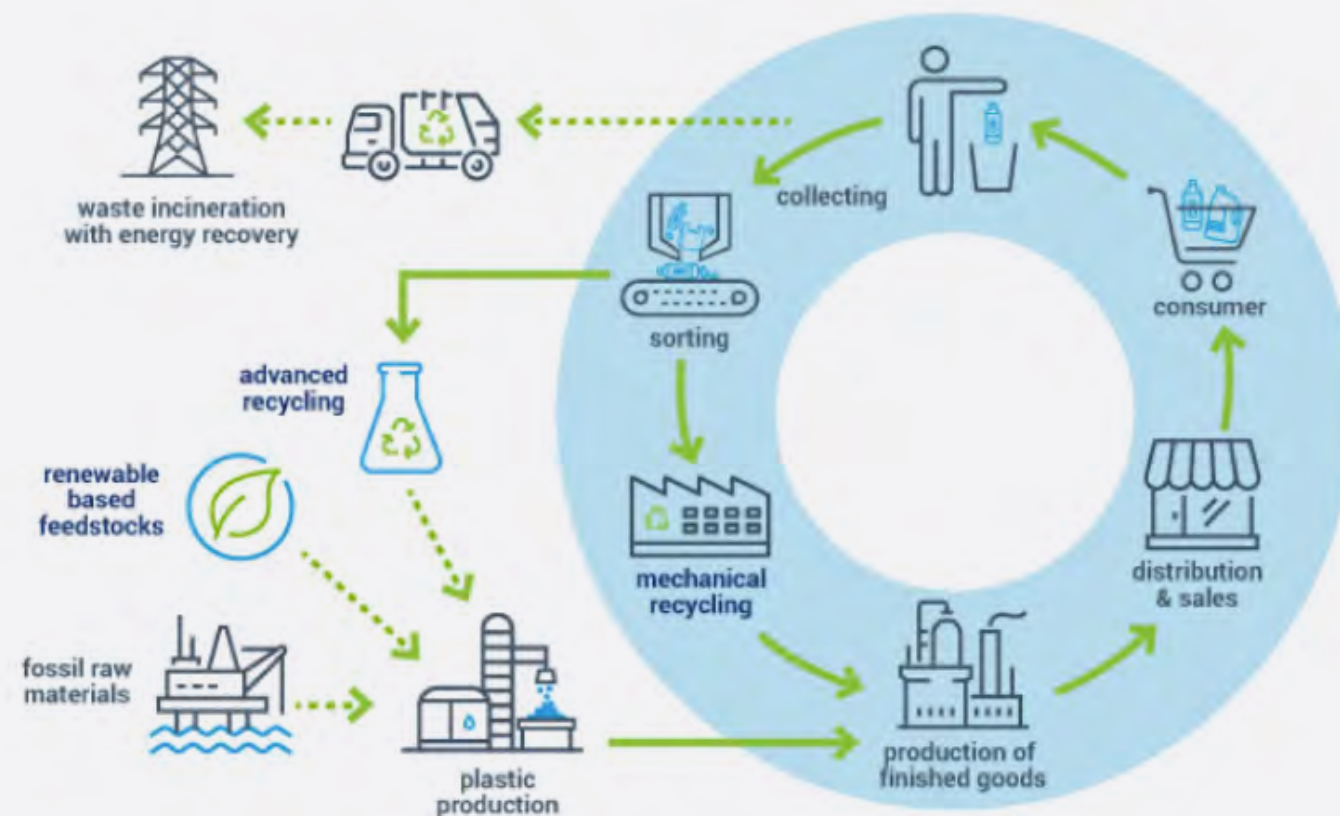
One Million

marine animals are killed by
plastic pollution every year



The Solution

Recycled Plastics



Source: PlasticsEurope - Highlighting the mechanical recycling process used by Circulen Recover.

Hotbox 1 Recycled and **Hotbox 4** are both made in Italy from **CirculenRecover** certified 100% Post Consumer Recycled Polypropylene created from ocean & landfill plastic waste.

By processing the plastic waste through a mechanical recycling method which is the shortest recycling loop, a lower carbon footprint can be achieved, helping to address the global challenges of plastic waste in the environment and climate change. We are supporting the reduction of plastic waste through the use of recycled content, and a lower carbon footprint through the use of renewable-based content as compared to Polymers from fossil-based sources.

According to the Ellen MacArthur Foundation, achieving a circular economy for plastics by 2040 has the potential to reduce the annual volume of plastics entering our oceans by 80%, reduce GHG emissions by 25%, generate a savings of \$200 billion per year, and create 700,000 net additional jobs.

Source: <https://ellenmacarthurfoundation.org/topics/plastics/overview>



The Solution

Recycled Fabric

The 100% Post Consumer Recycled Polyester (rPET) fabric, made from post consumer SUP water bottles, used for our luggage is **Global Recycled Standard** certified.

The Global Recycled Standard is a voluntary product standard for tracking and verifying the content of recycled materials in a final product. The standard applies to the full supply chain and addresses traceability, environmental principles, social requirements, chemical content and labelling. It also sets requirements for third-party certification of recycled content, chain of custody, and chemical restrictions.

Global Recycled Standard provides Hotbox with a tool for more accurate labelling, encourages innovation in the use of reclaimed materials, and establishes more transparency in our supply chain.

camira



Our **Hotbox 2 Fabric Covers**, plus our **Utility Case** textiles manufactured by Camira are certified to the **EU Ecolabel** which helps identify products and services that have a reduced environmental impact throughout their life cycle, from the extraction of raw material through to production, use and disposal. Recognised throughout Europe, the EU Ecolabel is a voluntary label promoting environmental excellence.

Partnering with Camira Fabrics enables us to offer high quality sustainable fabrics which are manufactured in the UK to **ISO 14001 standards**. Certified to the **SCS Indoor Advantage** certification program, our Fabric Covers and Utility Case offer an air quality certificate designed for interior building materials, furnishings and textiles. It qualifies for many building rating systems, including **LEED v4**, **BREEAM**, **WELL Building**, and **Living Building Challenge**.



***“Every year, 12 million tonnes of plastic is dumped into our oceans”
- Seaqual***

Seaqual textiles are fabrics made from recycled plastic waste collected from the oceans. By sourcing Seaqual fabrics, Hotbox are helping to clean up plastic waste from our oceans, contributing to marine conservation and reducing the harmful impact of plastic on marine life. This also assists in reducing the demand for new raw materials and promoting a circular economy. Producing textiles from recycled plastic generally requires less energy and resources compared to creating fabrics from virgin materials, reducing the overall environmental footprint. By choosing Seaqual textiles, we are contributing to a cleaner environment, promoting sustainable practices, and supporting the ongoing efforts to reduce plastic pollution in our oceans.

Hotbox 1 Recycled

Material

100% Post Consumer
Recycled Polypropylene

Colours



Packaging: Recycled Cardboard



Hotbox 2 Flax Covers

Material

75% Virgin Wool/25% Flax

Colours



Packaging: Biodegradable bags



Hotbox 4

Material

100% Post Consumer
Recycled Polypropylene

Colours



Packaging: Recycled Cardboard



Hotbox 2 Quest Covers

Material

100% post-consumer recycled
polyester inc. 75% SEAQUAL®YARN

Colours



Packaging: Biodegradable bags



Hotbox 2

Material

Grey - 60% Recycled Polypropylene
White - Polypropylene

Colours



Packaging: Recycled Cardboard



Utility Case

Material

60% Virgin Wool
40% True Hemp

Colours



Packaging: Biodegradable bags



Adapt

Material

100% Post Consumer
Recycled Polyester (rPET)

Colours



Packaging: Biodegradable bags
Recycled Cardboard



Folio

Material

100% Post Consumer
Recycled Polyester (rPET)

Colours



Packaging: Biodegradable bags
Recycled Cardboard



Shuttle

Material

100% Post Consumer
Recycled Polyester (rPET)

Colours



Packaging: Biodegradable bags
Recycled Cardboard



Utility Pouch

Material

100% Post Consumer
Recycled Polyester (rPET)

Colours



Packaging: Biodegradable bags
Recycled Cardboard



Flow

Material

100% Post Consumer
Recycled Polyester (rPET)

Colours



Packaging: Biodegradable bags
Recycled Cardboard





Supply Chain

We continually monitor our supply chain’s progress and review environmental performance on a regular basis.



Carbon Footprint Reduction

SME Climate Hub

Our logistics partners are part of the **SME Climate Commitment (SME Climate Hub)** which gives them access to a support network to further reduce their carbon footprint in line with targets and mitigate their impact on the planet.

Transport Management System

Through the use of a transport management system, our logistic partners are committed to **reducing the level of CO2** emitted by their fleet vehicles. All vehicles are fitted with tracking devices which monitor driving behaviour related to fuel efficiency and which reduce unnecessary mileage by selecting the most effective routing. The addition of **e-Transits** to their fleet is a really positive move towards achieving their company’s target of net-zero emissions by 2030. This signals the start of moving away from fossil fuel powered vehicles.

Electronic Green Invoicing Scheme

All clients are given the opportunity to subscribe to our electronic green invoicing scheme and are encouraged to designate a recipient email address for the forwarding of invoices, statements and reminders from our accounts department. This helps to **minimise both our and the clients carbon footprint** by cutting down on paper copies of invoices and statements, and the miles travelled to deliver them. On the accounts payable side we have created the facility within our own software to receive, allocate and approve supplier invoices electronically thus negating the need for paper copies and postal services.



Waste Reduction

Cardboard Recycling

In our supply chain all cardboard and plastic waste is baled using a Waste Press, which is collected and processed for **full recycling**. All recycling is certified.

Pallet Recycling

As part of our supply chain, we have a **full pallet recycling service**, re-using all pallets (standard, printers and euros) throughout the warehouse and distribution network. All treated pallets are kept for export services and all CHEP pallets are audited each week through the CHEP Pallet scheme.

The Useful Wood Company

Broken pallets in the UK that can’t be reused are collected by The Useful Wood Company. They recycle and reuse waste wood which helps to reduce deforestation and the need for landfill, which in turn helps to prevent the release of CO2 and methane into the atmosphere preventing damage to the environment. They are also a **social enterprise company** offering people who cannot access the job market at present the opportunity to gain experience of real work.

